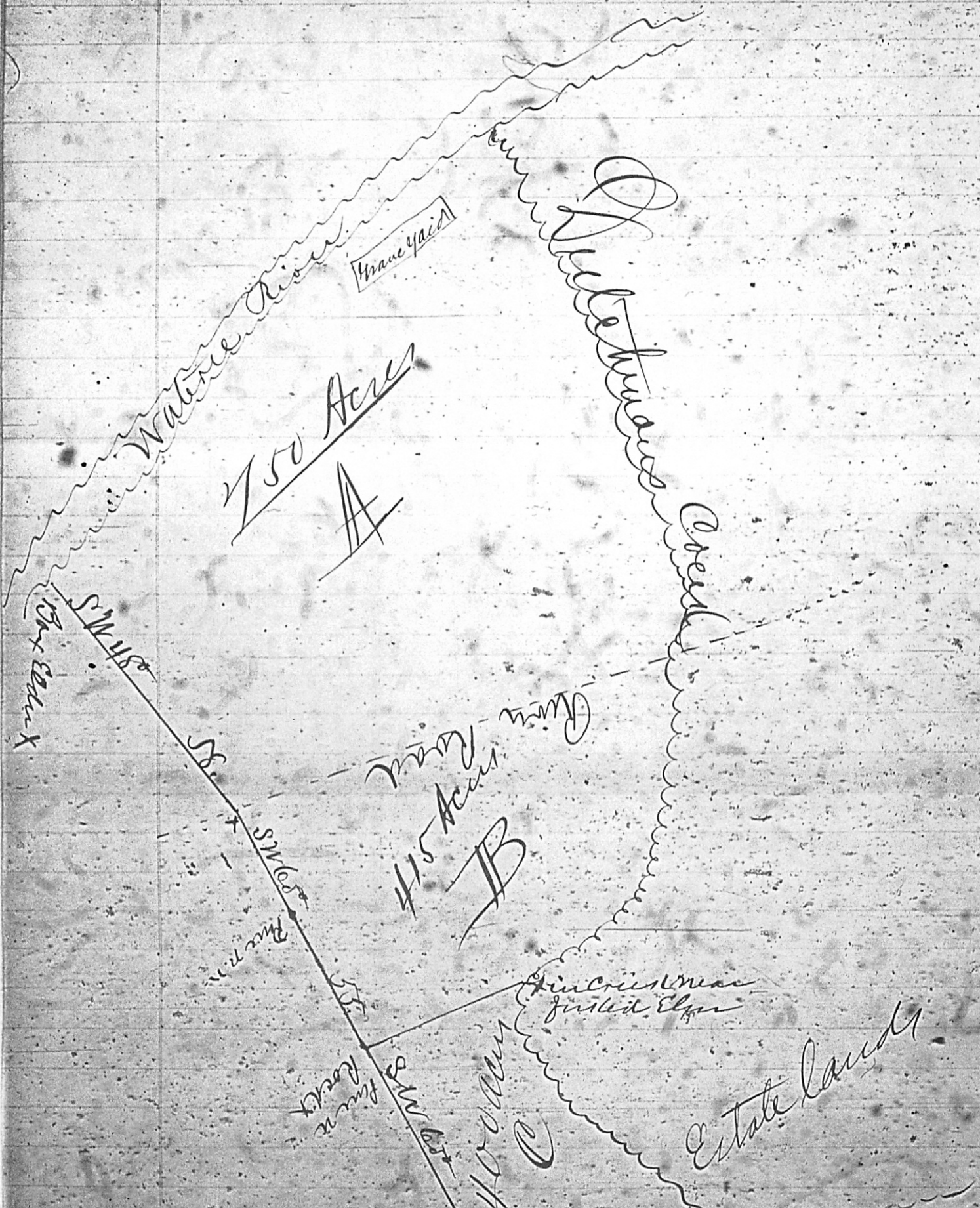


Deed Book AH Page 484 Bolton Place



Marion

Water River

750 Acres
A

Johnson Creek

Box 2000 X

Blue Run

415 Acres
B

SW 1/4
SW 1/4
SW 1/4

Pin Creek near
Jules Elgin

Pin
Rocky

400 Acres
C

Estate land

White land

Old
Hickory

Estate of
John Harrison

20 Chains per Inch

South Carolina

I do hereby certify that I have re-
 surveyed and admeasured the above delineated tract
 of Land known as the Butter place a part of the
 Real Estate of N. A. Gray decd which I find to
 contain Fifteen Hundred and Sixty five (1565)
 acres and divided it as follows viz A repre-
 sents 750 acres lying immediately on Water
 River and Big Dutchmans Creek and between
 the River and the River Road B 415 Acres
 lying on Big Dutchmans Creek S W of the River
 Road C 400 acres lying on Big Dutchmans
 Creek NE of the old Rocky Mount Road
 Situated in Fairfield County on the Waters
 of Water River and Big Dutchmans Creek
 and has such forms marks, buttings and
 boundaries as the above plat more fully
 represents

Surveyed Oct 5th 1869. B. N. Robertson
 S. S.

Record to date June 14th 1882